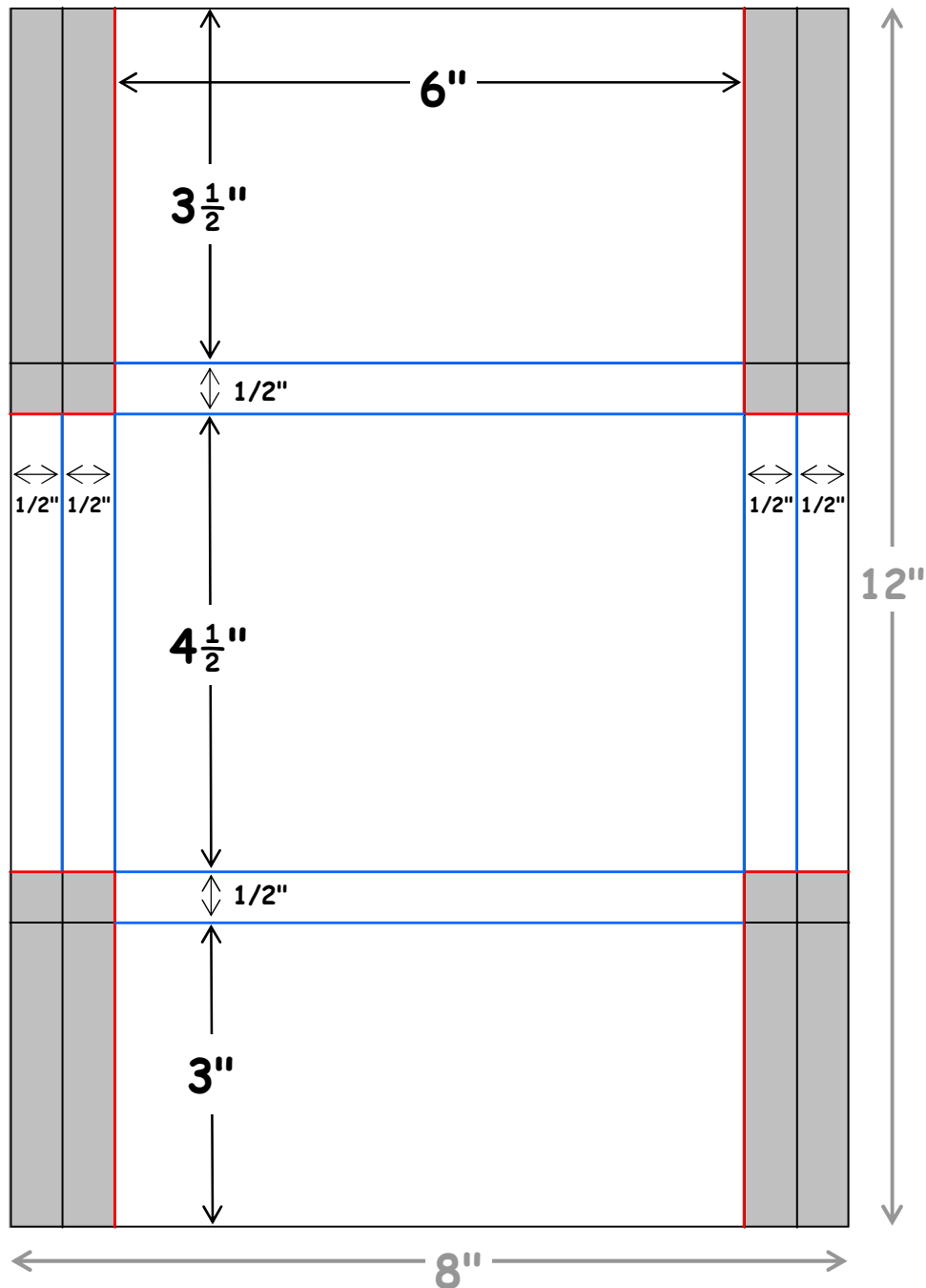


# STATIONERY BOX FOR 4 CARDS & ENVELOPES (from 8"x12" sheet)

Pattern by Kimberley Morris, procrastistamper@gmail.com

Take an 8" x 12" sheet of card stock or patterned paper, and cut and score as shown. Red lines are for **CUTTING**, blue lines are for **SCORING**. The shaded areas may be discarded, or used for embellishment on coordinating stationery. Box fits 4 standard sized cards (1/4 letter sheet) and envelopes.



## DIRECTIONS:

Score parallel to 8" side at 3", 3-1/2", 8" and 8-1/2". Turn sheet 90 degrees (1/4 turn) and score parallel to 12" side at 1/2", 1", 7", and 7-1/2". Cut off shaded areas. Wrap sides in, then fold bottom edge up and adhere to sides. Fold top flap down, and secure with Velcro®, belly band, or tie closed with ribbon.