

Box & Card Octet (8 Greeting Cards and Envelopes in a Card Stock Box)

by Kimberley Morris, procrastistamper@gmail.com



This is a simple, no-frills project that is sure to please. Eight light and summery stamped cards, and matching envelopes, fit in the box. These cards have been designed without a lot of bulk or depth, so they can be mailed without the need for extra postage. No precision cutting is necessary, all the images fit nicely on layered punched pieces. The design also uses coordinating Designer Series Paper, card stock and inks, for a consistent look throughout. These cards are great to keep at a writing desk, or to give away as a boxed stationery set.

SUPPLY LIST:

- Tart & Tangy stamp set
- One Smart Cookie stamp set
- So Swirly Jumbo wheel & handle
- Bashful Blue Jumbo ink cartridge
- Summer Picnic Designer Series Paper (DSP)
- 12" x 12" Bashful Blue card stock
- Real Red card stock and marker
- Old Olive card stock and marker
- Pumpkin Pie card stock and marker
- Certainly Celery card stock & marker or pad
- Bashful Blue card stock
- Whisper White card stock
- Only Orange marker
- Basic Black ink pad or marker
- Medium Whisper White envelopes
- Scallop Circle Punch
- 1-1/4" Circle Punch
- 1-3/8" Circle Punch
- 5 Petal Flower Punch
- Small Tag Punch
- Tag Punch
- 1/16" Circle Punch
- Word Window Punch
- White 1/4" Grosgrain Ribbon
- Mini Glue Dots®
- SNAIL
- Sticky Strip
- Brads (Bashful Blue, More Mustard)
- Velcro® or similar fastener for box lid (optional)

CUTTING/PREPARATION NOTES:

- All card fronts are 1/2 letter sheet of card stock, scored in half, for standard sized card.
- Designer Series Paper layers are 3-3/4" x 3", card stock layers are 4" x 3-1/4"
- Box template and cutting directions are on page 2

CLASS ADVERTISING/SALES: If you are a Stampin' Up!® Demonstrator, you may use these instructions for a class. However, I will not be releasing any electronic copyrights for the instructions—which means that no one else will be allowed to post them on any web site, or email electronic copies to others. Permission is granted to use the picture on this page (with my copyright mark intact) for advertising your class electronically, if you wish. All other copies of the instructions, whether shared with customers or downline, should be printed out and ONLY disseminated via hard copy. Please respect the time and effort that has gone into the assembly of this instruction packet, by referring others who would like electronic copies for their use (business or personal), directly to me.

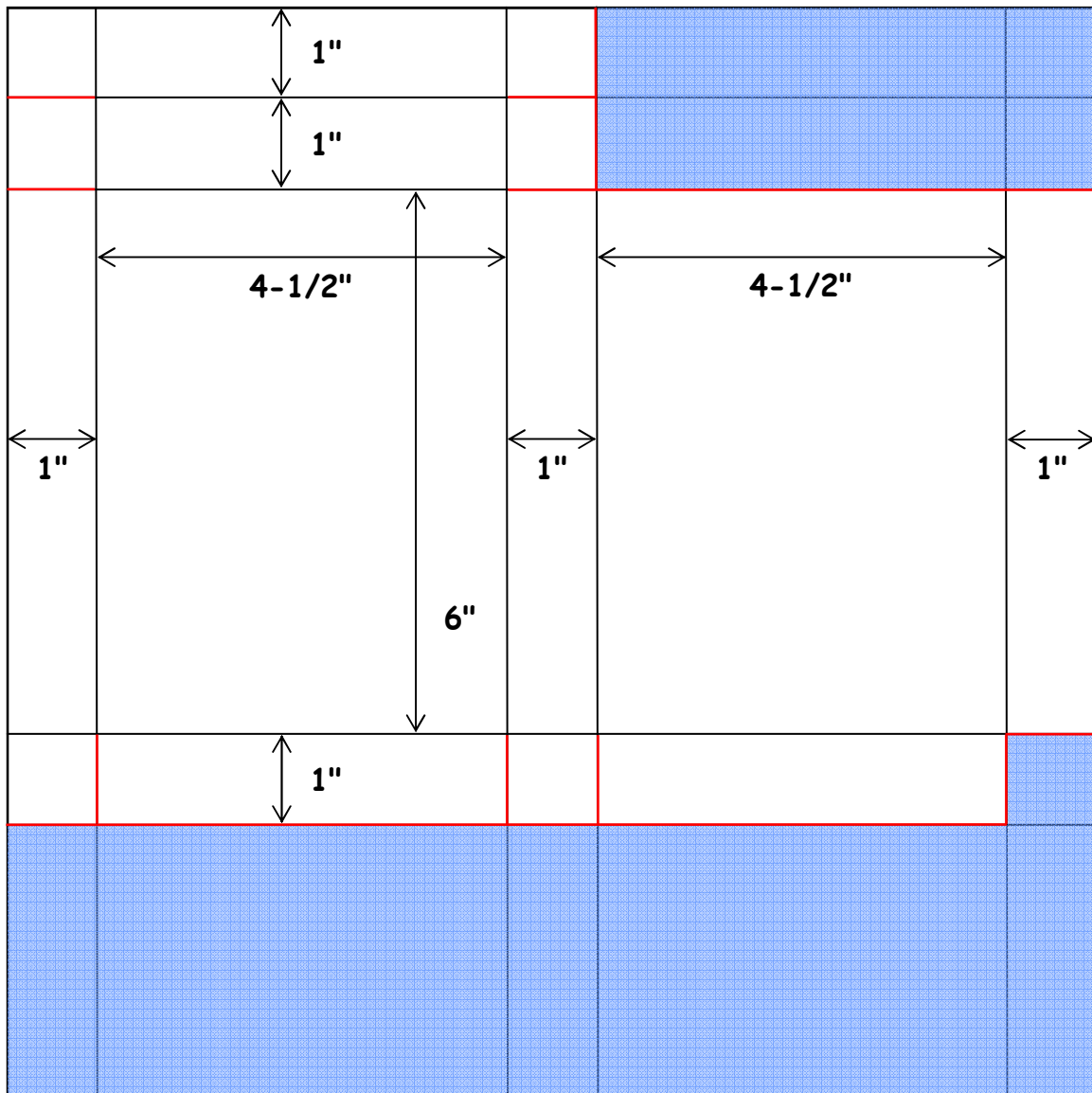
****These directions are not to be included with any Class To Go, stamping "kit", or other retail offering.****

Box & Card Octet (8 Greeting Cards and Envelopes in a Card Stock Box)

by Kimberley Morris, procrastistamper@gmail.com

This Box & Card Octet features a storage box made from one sheet of 12" x 12" card stock. Eight standard foldover cards (4-1/4" x 5-1/2") and envelopes (4-3/8" x 5-3/4") will fit inside. The diagram below shows cut and score marks for the 12" x 12" card stock sheet. Tips and cutting instructions can be found below diagram.

BLACK LINES = SCORE MARKS **RED LINES = CUT MARKS** **BLUE AREAS = UNUSED CARD STOCK**



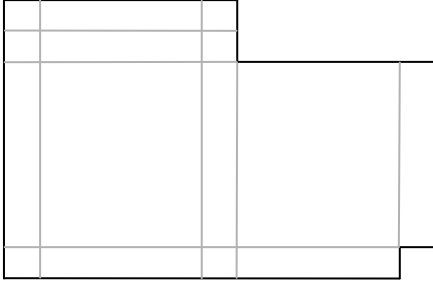
TIP: Since the entire last 3 inches of the card stock shown at the bottom of this diagram will not be needed, trim it off the sheet before you score. You can use the scraps and excess to punch out greetings for your cards, and use them on other projects, as well.

Score at 1", 5-1/2", 6-1/2", and 11", making score lines parallel to the shortest side of your trimmed sheet. Then turn sheet 1/4 turn and score at 1", 2", and 8", making score lines parallel with the longest side of your trimmed sheet. The more exact your score marks are measured, the easier time you'll have assembling your box. Trim off the area at the top of the box, and the square in the lower right corner that will not be used, then cut along score lines as shown in red on the diagram.

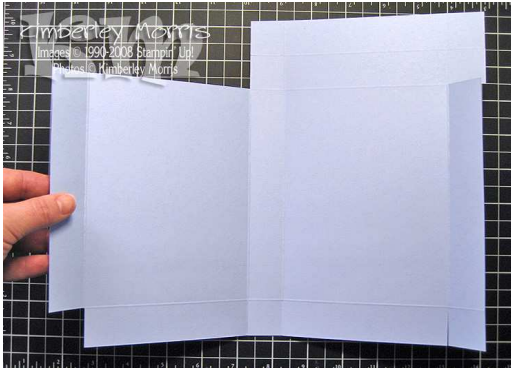
Box & Card Octet (8 Greeting Cards and Envelopes in a Card Stock Box)

by Kimberley Morris, procrastistamper@gmail.com

Before assembling box, place cut and trimmed piece in front of you, oriented in the direction shown below, and roll over the side that's facing up, with Jumbo So Swirly wheel, using Bashful Blue ink cartridge.



To assemble box, turn it over, then wrap around and adhere the sides and bottom, using at least one piece of Sticky Strip on the side and bottom. Fold the top flap corners over each other and adhere in place. Note the sequence shown below, folding the flaps toward the back so that from the front you only see smooth folds on your box.



With the box top closed, place a light pencil mark at least 1/8" under the lip, on each side of the box. Open the box top. Using the 1/16" punch, reach down into each side of the box and punch a hole at the center of each pencil line. Erase the pencil lines after punching. These holes are for the brads to hold the ribbon handle on each side.

Take about 15" of White 1/4" Grosgrain ribbon, and fold the last 1/2" of each end back onto itself (so cut and/or frayed ends will remain hidden). Use a Mini Glue Dot® to hold the ribbon down on itself. Punch a 1/16" hole in each of the folded over ribbon ends, and secure ribbon to each side of the box with a Bashful Blue brad through each of the holes you punched.

Ink up the strawberry from the Tart & Tangy stamp set, using Old Olive and Real Red markers. Stamp inked strawberry onto Whisper White card stock, then punch out with 1-1/4" Circle Punch. Punch a 1-3/8" circle from Old Olive card stock, and a Scallop circle from Real Red card stock. Layer the strawberry onto the Old Olive circle, then layer that onto the Real Red Scallop circle.

Attach TOP HALF ONLY of back of Scallop circle to front center of lid with Mini Glue Dots. On the bottom half of the back of the Scallop circle, use Velcro®, or other fastener to keep box closed.

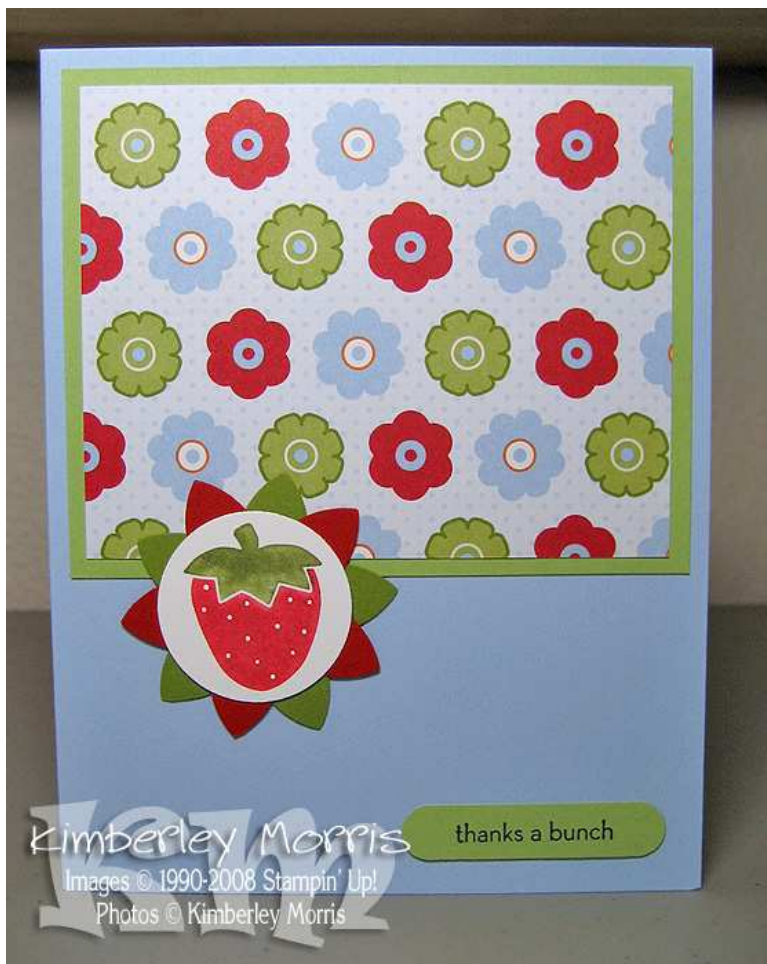
Box & Card Octet (8 Greeting Cards and Envelopes in a Card Stock Box)

by Kimberley Morris, procrastistamper@gmail.com

STRAWBERRY CARD (make two)

SUPPLIES:

Tart & Tangy set (strawberry)
One Smart Cookie set ("thanks a bunch")
Bashful Blue card stock
Certainly Celery card stock
Whisper White card stock
Summer Picnic Designer Series Paper
Real Red and Old Olive markers
Basic Black (ink pad or marker)
5 Petal Flower punch
1-1/4" Circle punch
Word Window punch



DIRECTIONS:

1. Cut a sheet of Bashful Blue card stock to 5-1/2" x 8-1/2", and score to fold over to a 5-1/2" x 4-1/4" card base.
2. Cut a piece of Certainly Celery card stock to 4" x 3-1/4".
3. Cut a piece of Summer Picnic DSP to 3-3/4" x 3", and layer onto piece 2.
4. Adhere layered piece to card front, as shown.
5. Ink up strawberry from Tart & Tangy set, using Old Olive and Real Red markers.
6. Exhale onto inked image to remoisten, then stamp onto Whisper White card stock.
7. Punch out strawberry with 1-1/4" circle.
8. Punch one 5 Petal Flower out of Real Red card stock, and one out of Old Olive card stock.
9. Layer the two punched flowers over each other and adhere.
10. Layer the punched strawberry onto the 5 Petal Flowers, then attach medallion to card front, as shown. (Mini Glue Dots are recommended, as the medallion will overlap layers of different heights)
11. Stamp "thanks a bunch" saying from One Smart Cookie stamp set in Basic Black ink onto Certainly Celery card stock, and punch out with Word Window punch.
12. Adhere saying to bottom right of card, as shown.

Box & Card Octet (8 Greeting Cards and Envelopes in a Card Stock Box)

by Kimberley Morris, procrastistamper@gmail.com

ORANGE CARD (make two)

SUPPLIES:

- Tart & Tangy set (orange)
- One Smart Cookie set ("orange you cute")
- Old Olive card stock
- Pumpkin Pie card stock
- Whisper White card stock
- Summer Picnic Designer Series Paper
- Only Orange and Pumpkin Pie markers
- Basic Black (ink pad or marker)
- 1-3/8" Circle punch
- 1-1/4" Circle punch
- Word Window punch



DIRECTIONS:

1. Cut a sheet of Old Olive card stock to 5-1/2" x 8-1/2", and score to fold over to a 5-1/2" x 4-1/4" card base.
2. Cut a piece of Pumpkin Pie card stock to 4" x 3-1/4".
3. Cut a piece of Summer Picnic DSP to 3-3/4" x 3", and layer onto piece 2.
4. Adhere layered piece to card front, as shown.
5. Ink up orange from Tart & Tangy set, using Only Orange marker.
6. Ink over peel of orange, and center area of orange, with Pumpkin Pie marker. (this creates a subtle gradient, making the image more interesting to the eye)
7. Exhale onto inked image to remoisten, then stamp onto Whisper White card stock.
8. Punch out orange with 1-1/4" circle.
9. Punch a 1-3/8" Circle from Pumpkin Pie card stock, and layer the orange onto it.
10. Attach medallion to card front, as shown. (Mini Glue Dots are recommended, as the medallion will overlap layers of different heights)
11. Stamp "orange you cute" saying from One Smart Cookie stamp set in Basic Black ink onto Pumpkin Pie card stock, and punch out with Word Window punch.
12. Adhere saying to bottom right of card, as shown.

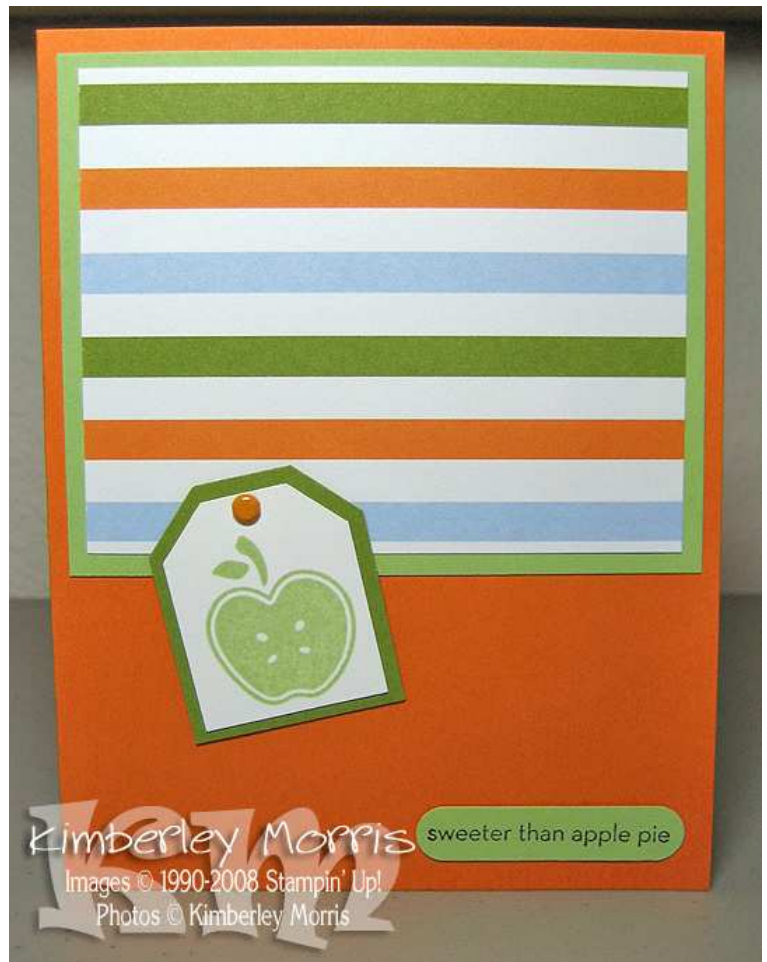
Box & Card Octet (8 Greeting Cards and Envelopes in a Card Stock Box)

by Kimberley Morris, procrastistamper@gmail.com

APPLE CARD (make two)

SUPPLIES:

Tart & Tangy set (apple)
One Smart Cookie set ("sweeter than apple pie")
Pumpkin Pie card stock
Certainly Celery card stock
Old Olive card stock
Whisper White card stock
Summer Picnic Designer Series Paper
Certainly Celery (ink pad or marker)
Basic Black (ink pad or marker)
Tag punch
Small Tag punch
1/16" Circle punch
Word Window punch
More Mustard brad



DIRECTIONS:

1. Cut a sheet of Pumpkin Pie card stock to 5-1/2" x 8-1/2", and score to fold over to a 5-1/2" x 4-1/4" card base.
2. Cut a piece of Certainly Celery card stock to 4" x 3-1/4".
3. Cut a piece of Summer Picnic DSP to 3-3/4" x 3", and layer onto piece 2.
4. Adhere layered piece to card front, as shown.
5. Ink up apple from Tart & Tangy set, using Certainly Celery (marker or ink pad).
6. Stamp onto Whisper White card stock, then punch out with Small Tag punch.
7. Punch Tag (the larger one) from Old Olive card stock, and layer the apple onto it.
8. Punch a 1/16" hole at the top of the layered tag, and insert a More Mustard brad.
9. Adhere medallion to card front, as shown. (Mini Glue Dots are recommended, as the medallion will overlap layers of different heights, and the legs of the brad are difficult to apply SNAIL around effectively)
10. Stamp "orange you cute" saying from One Smart Cookie stamp set in Basic Black ink onto Old Olive card stock, and punch out with Word Window punch.
11. Adhere saying to bottom right of card, as shown.

Box & Card Octet (8 Greeting Cards and Envelopes in a Card Stock Box)

by Kimberley Morris, procrastistamper@gmail.com

CHERRY CARD (make two)

SUPPLIES:

Tart & Tangy set (cherries)
One Smart Cookie set ("thanks a bunch")
Real Red card stock
Bashful Blue card stock
Old Olive card stock
Whisper White card stock
Summer Picnic Designer Series Paper
Real Red and Old Olive markers
Basic Black (ink pad or marker)
1-3/8" Circle punch
Scallop Circle punch
Word Window punch



DIRECTIONS:

1. Cut a sheet of Real Red card stock to 5-1/2" x 8-1/2", and score to fold over to a 5-1/2" x 4-1/4" card base.
2. Cut a piece of Bashful Blue card stock to 4" x 3-1/4".
3. Cut a piece of Summer Picnic DSP to 3-3/4" x 3", and layer onto piece 2.
4. Adhere layered piece to card front, as shown.
5. Ink up cherries from Tart & Tangy set, using Real Red and Old Olive markers.
6. Exhale onto inked image to remoisten, then stamp onto Whisper White card stock.
7. Punch cherries out with 1-3/8" Circle punch.
8. Punch Scallop Circle from Old Olive card stock, and layer the cherries onto it.
9. Attach medallion to card front, as shown. (Mini Glue Dots are recommended, as the medallion will overlap layers of different heights)
10. Stamp "thanks a bunch" saying from One Smart Cookie stamp set in Basic Black ink onto Bashful Blue card stock, and punch out with Word Window punch.
11. Adhere saying to bottom right of card, as shown.

Box & Card Octet (8 Greeting Cards and Envelopes in a Card Stock Box)

by Kimberley Morris, procrastistamper@gmail.com

ENVELOPES (make eight)

SUPPLIES:

Tart & Tangy set
Jumbo So Swirly wheel
Bashful Blue Jumbo ink cartridge
Medium Whisper White envelopes
Real Red and Old Olive markers
Only Orange and Pumpkin Pie markers
Certainly Celery (ink pad or marker)

DIRECTIONS:

1. Roll the flap of each envelope with the So Swirly Jumbo wheel, using the Bashful Blue ink cartridge.
2. Stamp the same fruit on the front of two envelopes, inking them up in the same fashion as the fruit on their coordinating cards. Repeat for each of the four different fruits. You'll end up with 8 envelopes, two with a strawberry on the front, two with an orange on the front, two with an apple on the front, and two with cherries on the front.

Place each card with its coordinating envelope behind it, into the stationery box.

NOTE: If you have the Word Window punch, you can always stamp an alternate greeting, punch it out, and paste it over the one on the card...in case of "emergency"!

