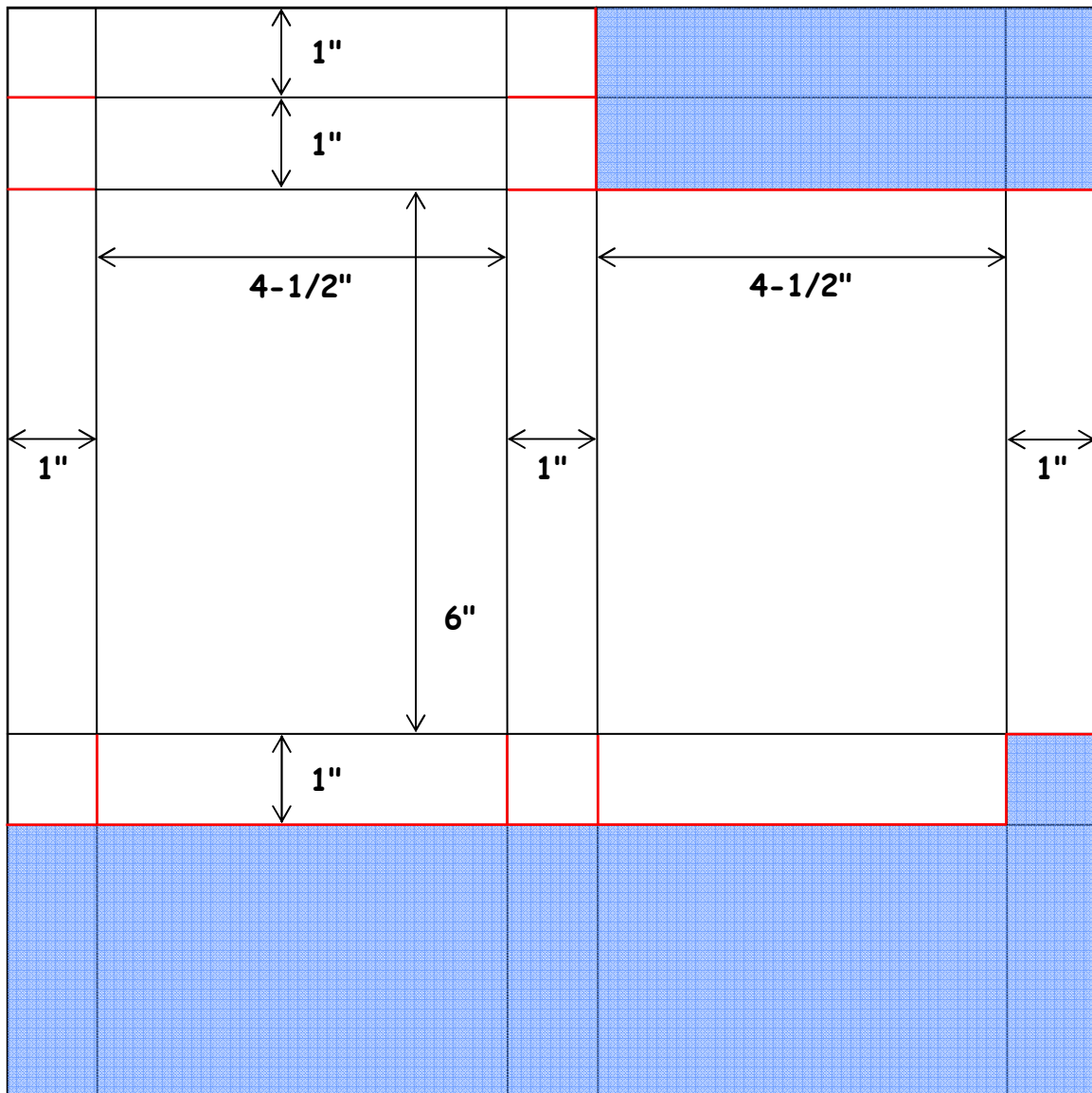


Box & Card Octet (8 Greeting Cards and Envelopes in a Card Stock Box)

by Kimberley Morris, procrastistamper@gmail.com

This Box & Card Octet features a storage box made from one sheet of 12" x 12" card stock. Eight standard foldover cards (4-1/4" x 5-1/2") and envelopes (4-3/8" x 5-3/4") will fit inside. The diagram below shows cut and score marks for the 12" x 12" card stock sheet. Tips and cutting instructions can be found below diagram.

BLACK LINES = SCORE MARKS **RED LINES = CUT MARKS** **BLUE AREAS = UNUSED CARD STOCK**

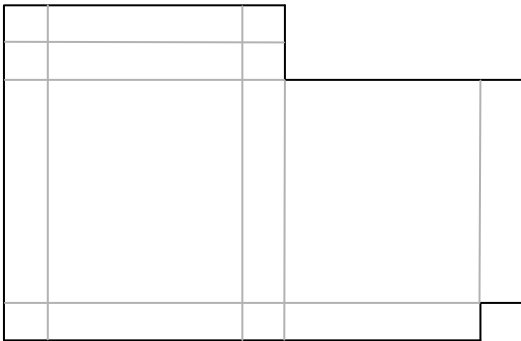


TIP: Since the entire last 3 inches of the card stock shown at the bottom of this diagram will not be needed, trim it off the sheet before you score. You can use the scraps and excess to punch out greetings for your cards, and use them on other projects, as well.

Score at 1", 5-1/2", 6-1/2", and 11", making score lines parallel to the shortest side of your trimmed sheet. Then turn sheet 1/4 turn and score at 1", 2", and 8", making score lines parallel with the longest side of your trimmed sheet. The more exact your score marks are measured, the easier time you'll have assembling your box. Trim off the area at the top of the box, and the square in the lower right corner that will not be used, then cut along score lines as shown in red on the diagram.

Vintage Vogue Stationery Box (fits 8 Greeting Cards and Envelopes)

by Kimberley Morris, procrastistamper@gmail.com

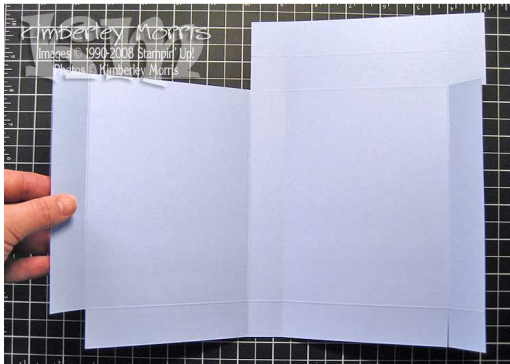


Before assembling box, place cut and trimmed piece in front of you, oriented in the direction shown at left, and decorate the side that's facing up, if you wish.



To assemble box, turn it over, then wrap around and adhere the sides and bottom, as shown below. Use at least one piece of Sticky Strip on the side and bottom for maximum hold. Fold the top flap corners over each other and adhere in place as shown below, folding the flaps toward the back so that from the front you only see smooth folds from the front of your box.

With the box top closed, place a light pencil mark at least 1/8" under the lip, on each side of the box. Open the box top. Using the 1/16" punch, reach down into each side of the box and punch a hole at the center of each pencil line. Erase the pencil lines after punching. These holes are for the brads to hold the ribbon handle on each side.



Take about 15" of ribbon, and fold the last 1/2" of each end back onto itself (so cut and/or frayed ends will remain hidden). Use a dab of SNAIL to hold the ribbon down on itself. Punch a 1/16" hole in the center of each of the folded over ribbon ends, and secure ribbon to each side of the box with a brad through each of the holes you punched (rhinestone brads look especially pretty here!).

For the closure, you will decorate a Scallop Circle punch as desired. Attach ONLY THE TOP HALF of back of Scallop circle to front center of lid with Mini Glue Dots® or Sticky Strip. On the bottom half of the back of the Scallop circle, adhere Velcro®, or other fastener to keep box closed.

To get the ribbon folds shown on the box pictured at top right, place a length of Sticky Strip across a card stock scrap the same width as the box. Lay ribbon down starting at the left edge, then fold ribbon onto itself, ensuring the fold overlap is big enough for the width of a Mini Glue Dot. After you have completed laying down folds across the length of the card stock scrap, go back and put a Mini Glue Dot under of the folded ribbon flaps, to hold them down. Trim ends of ribbon neatly, and adhere card stock strip to front of box.