

4-1/4" x 4-1/4" FOUR CARD BOXED SET

Box holds 4 foldover cards and 4 custom trimmed envelopes.

These cards are designed to efficiently use card stock and Designer Series Paper. You can get two cards out of each sheet of 8-1/2"x11" card stock, by first cutting it to 8-1/2" square. (Keep the strip you cut off, as it is used to decorate the card fronts.) Cut your 8-1/2" square in half at 4-1/4". Then foldover each piece to create 4-1/4" square cards. Designer Series Paper is cut to 4" squares for use in decorating the card fronts, and the box front.



Raspberry Tart Set Stampin' Supplies: Raspberry Tart DSP, Rose Red card stock (box), Pretty in Pink card stock, Kiwi Kiss card stock, Pretty in Pink Tafetta Ribbon and 1-1/4" Grosgrain Ribbon, Kiwi Kiss Satin Ribbon, Sweetest Stems stamp set, Regal Rose ink pad, Kiwi Kiss ink pad, Sweetest Stem Embosslit, Horizontal Slot Punch (for ribbon hole at fold), Versamarker (to color in debossed part of embosslit die cut).



Urban Garden Set Stampin' Supplies: Urban Garden DSP, Not Quite Navy card stock and ink, Baja Breeze card stock and ink, Kiwi Kiss card stock and ink, Basic Gray card stock and ink, Upsy Daisy stamp set, Whisper White card stock, Baja Breeze 1" Double Stitched Grosgrain Ribbon, White Tafetta ribbon (dyed with Kiwi Kiss ink pad & Stampin' Sponge), Very Vanilla Grosgrain Ribbon, Star Punch, Wide Oval Punch, Stampin' Sponge, Horizontal Slot Punch (for ribbon hole at fold and side).

4-1/4" x 4-1/4" FOUR PACK BOXED SET - CUSTOM BOX PATTERN

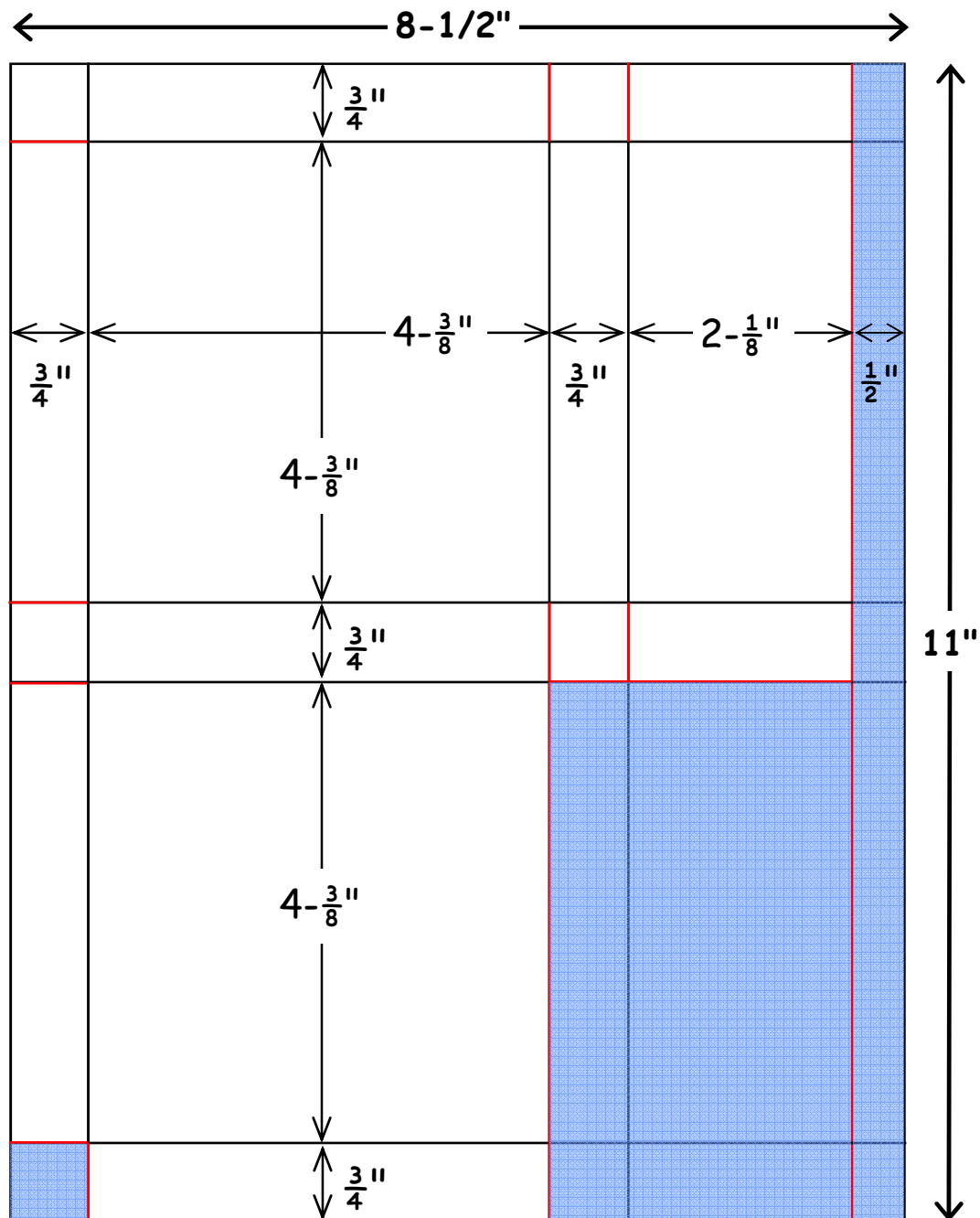
by Kimberley Morris <procrastistamper@gmail.com> <http://procrastistamper.blogspot.com>

Use the pattern below to create a one piece box from one sheet of 8-1/2"x11" card stock. This box will hold at least four 4-1/4"x4-1/4" foldover cards and trimmed envelopes.

RED = CUT LINES

BLACK = SCORE LINES

BLUE = UNUSED CARD STOCK



DIRECTIONS:

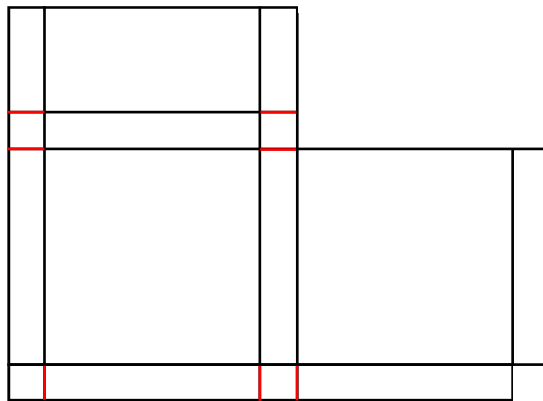
Cut 1/2"x11" strip from sheet of card stock, leaving an 8"x11" sheet. You may use this strip to decorate cards, if you wish. Next, score parallel to the 11" side of the remaining sheet at 3/4", 5-1/8", and 5-7/8". Then score parallel to the 8" side at 3/4", 5-1/8", 5-7/8", and 10-1/4".

After that, you will cut along the score lines, which have been marked in red on the pattern above. Fold the box around itself and adhere sides and bottom with Sticky Strip, or other high-tack adhesive. The front flap folds over and is adhered to the 3/4" square flaps on the side, to create a flip-top for the box.

4-1/4" x 4-1/4" FOUR PACK BOXED SET - Box Assembly Instructions

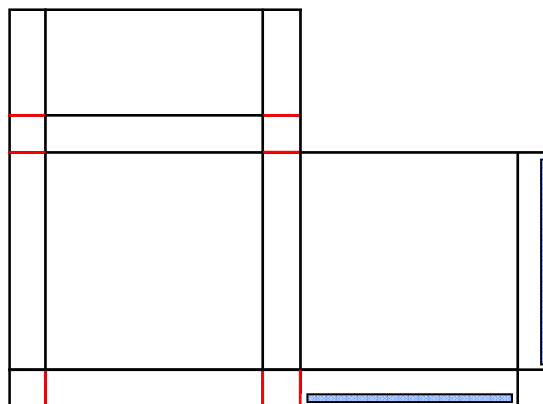
by Kimberley Morris <procrastistamper@gmail.com> <http://procrastistamper.blogspot.com>

Your cut and scored box should appear similar to the drawing at the right. The red lines indicate score lines, along which you should have cut. When lying in this orientation, the side facing up is going to be the inside of your box. If you are going to stamp the outside of your box, you should turn it over and do that now. Otherwise, you will have the opportunity to add patterned or decorated paper to the box once it is assembled.



ASSEMBLY:

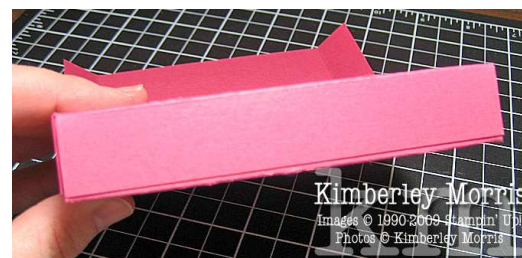
1. Place Sticky Strip adhesive on the inside flaps where indicated in blue on the drawing to the right. Leave the red protective covering on each adhesive strip until you are ready to adhere that section.



2. For easier assembly, crease all the score marks towards the center of the box before folding. Wrap the box around itself and adhere side flap, as shown below.



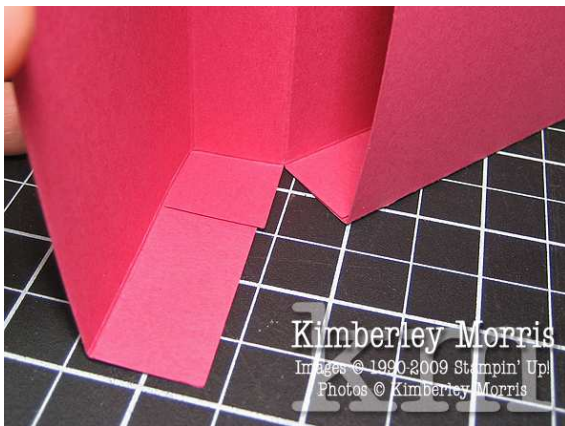
3. Then, fold in the bottom flaps. First fold in the 3/4" square flaps, then the flap from the back, and lastly, the flap from the front (which should have Sticky Strip on the underside--don't forget to remove the red liner just before you adhere it!). See pictures below for detail.



4. Place adhesive on the back of the 3/4" square flaps of the lid, and at the top of each long side flap, as indicated by the four grey rectangles in the picture below.



5. Finally, fold over front flap and adhere 3/4" squares to folded back sides of front flap. Trim off any parts of the 3/4" squares which are exposed. See pictures below for more detail.



The box may be closed with a Velcro® fastener, or you may tie wide ribbon in a knot at the front. Knotted ribbon will slide on and off the box to allow it to be opened and closed.



You may also choose to decorate the outside of your box with DSP. You can use a 4" square and cut it at 1-3/4" to layer on the lid flap, then place the other piece on the box under the flap.